

Reasoning Test-3

Directions [1-5]:- Answer the questions based on the information given below.

A word arrangement machine when given an input rearranges them following a particular rule in each step. The following is an illustration of input and rearrangement.

Input: ARCHITECT CHAIRMAN THOUGHT VICTIM BIRTHDAY

Step I: TCETIHCRA NAMRIAHC THGUOHT MITCIV YADHTRIB

Step II: TTRIHECCA AMNRACHI UTTOHHG IMTCIV ADHYBIRT

Step III: TTRI8ECCA AMN19CHI UTT15HHG IM23IV ADH27IRT

Step IV: TTR24CC MN38CH TT15HHG M46V DH54RT

Step V: GGIFXX NMKXS GGFSST NJE WSIIG

Step V is the last step of the above input. As per rules followed in the above steps, find out in each of the given questions the appropriate steps for the given input.

'BREATHING DEFINITION EXPAND FASCINATING LIMITED'

Q1. What is the last step of the given input?

- A.GIMFTY MCUM WJKC GHMMITUX GIONW
- B.GMIFTY MCUM WKKC GHMMITUX GNOIW
- C.GIMFTY MCUM WJKC GHMMITUX GNOIW
- D.GIMFTY MUCM WJKC GHMMITUX GNOIW
- E.GIMFTY MUMC WJKC GHMMITUX GNOIW

Q2. In step III, which letter is 5th to the left of 3rd word from the right end?

- A.O B.N C.F D.D E.E

Q3. What is the sum of highest and lowest number obtained in step IV?

- A.123 B.138 C.45 D.55 E.128

Q4. _____ is the step II of the given input.

- A.TRNIHGEB A IINOTIFNED ADNEX TSNNIIGFCAA TMLIIED
- B.TRNIHGEB A IINOTDEFIN ADNEX TSNIIGFCAA TMLIIED
- C.TRNIHGEB A IINOTDEFIN ADNEX TSNNIIGFCA TMLIIED
- D.TRNIHGEB A IINOTNIFED ADNEX TSNNIIGFCAA TMLIIED
- E.TRNIHGEB A IINOTDEFIN ADNEX TSNNIIGFCAA TMLIIED

Q5. If another step is step VI of the given input and if in step VI, all the words are arranged as per the English dictionary order from left to right, then what is the step VI of the given input?

- A.GHMMITUX GIMFTY GNOIW MCUM WQRC
- B.GHMMITUX GIMFTY GNOIW MCUM WJKC
- C.GHMMITUX GIMFTY GNOIW MCUM WJKC
- D.GHMNITUX GIMFTY GNOIW MCUM WJKC
- E.GHMMITUX GIMFTY GNLRW MCUM WJKC

Directions [6-8]:- Answer the questions based on the information given below.

In a cricket tournament, nine batsman Devika, Ruhi, Menika, Farah, Vibhu, Neerav, Megh, Tulika, and Amit, score different runs. Each of them plays for four different Teams among Team A, Team B, Team C and Team D. At least two and at most three persons play for the same team. The score of each person is a whole number which is more than 40 but less than or equal to 100. No two persons scored the same runs.

Neerav's score is a perfect square number. Runs scored by Tulika is the average of

the runs scored by Vibhu and Neerav. Only Megh scores prime number of runs. Neerav scores 3 runs more than Megh. The one, who scores 7 runs less than Menika plays for Team A. Tulika plays for Team D. Ruhi scores 48 runs. Vibhu, who plays for Team B scores run, which is multiple of 23. Difference between the scores of Farah and Devika is 31. Difference between Tulika's score and one of the persons, who play for Team B is 30. Neerav and Megh doesn't play for the same team as Vibhu. Both Neerav and Megh play for different teams but neither of them play for Team D. Menika and Neerav play for the same team. The sum of runs scored by Amit and Menika is 170. Run's scored by Amit is the multiple of 11. Menika doesn't score less than Amit. Ruhi and Amit play for the same team.

Q6. Devika plays for which Team?

Statement I: Devika scores more runs than Amit.

Statement II: Farah scores less runs than Menika.

- A.Only II B.Only I C.Neither I nor II D.Both I & II E.None of the above

Q7. What is the sum of the runs scored by Vibhu and Tulika?

- A.188 B.119 C.170 D.101 E.168

Q8. Which among the following option(s) is/are definitely true?

- A.Neerav plays for Team A B.Megh scores 61 runs and plays for Team C
- C.Menika plays for Team C D.Both options 'C' and 'E' E.Amit plays for Team B

Q9. Given below are four combinations (i) , (ii) , (iii) and (iv) of five letters word. In each combination you have to arrange the letters as per the English alphabetical order from left to right. Then in each combination the place value of the first letter (as per English alphabetical series) from the right end is numbered as I, the place value of second letter from the right end is numbered as II and so on. Hence in each combination I, II, III, IV, and V will denote the place value of the letters from the right end.

(i) DRAFT (ii) GUEST (iii) INDEX (iv) STUDY

From each of the given words, the letters, which are at the same position are clubbed together. The sum of the place value of letters at which position (I, II, III, IV, V) will be a composite number if taken in order of combination (i) , (ii) , (iii) , and (iv) respectively.

- A.Only I, II, III and IV B.Only I and III C.Only II, III and IV D.Only I, III, IV and V E.Only III and V

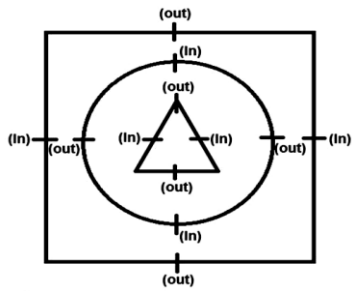
Q10. Conclusions:- I. $M \geq A$ II. $M < T$ III. $I \geq T$

Statements: I. $I = M > L \geq B < T = S \leq A$ II. $T \geq D = J > M \geq O \geq P > A, I \geq B < A$ III. $I \leq S = R < T \leq U, U > M = K, K \geq A$

- A.Only I and III B.Only II and III C.Only I and II D.Only II E.None

Directions [11-15]:- Answer the questions based on the information given below.

In a hall, there are three concentric tables as shown in the figure below. Twelve persons M, N, O, P, Q, R, S, T, U, V, W and X sits at different nodes of the tables such that some face toward the centre while the remaining face away from the centre, as shown in the figure. The persons, who sit on the square shaped table like different animals among Tiger, Cow, Zebra and Dog.



Note:

'in' represents that the person faces towards the centre while 'out' represents that the person faces away from the centre.

Conditions:

I. If it is given that A faces B, then A and B sit opposite to each other on different tables and face towards each other.

II. If it is given that A and B sits opposite to each other, then A and B sit opposite to each other in different tables and face away from each other.

III. If it is given that A and B sits adjacent to each other then both of them sit on the same table, unless stated otherwise.

M faces X. X sits opposite to the one, who likes Tiger. X does not face away from the centre. The one, who sits adjacent to M sits opposite to Q. Q and P face in the same direction and sit on the different tables. P doesn't like Tiger. T sits third to the right of O. T faces V. V neither sits in the triangular table nor sits opposite to P. V doesn't sit adjacent to the one, who likes Tiger. S and W face towards the centre. W doesn't sit opposite to V. The one, who sits immediate right of W faces U. R and S sit on the different tables. R sits immediate right of the one, who likes Cow. R doesn't like Dog. N doesn't sit adjacent to P. N doesn't face Q.

Q11. Which among the following statement(s) is/are definitely true?

Statements:

- I. U sits immediate right of the one, who likes Cow.
- II. The one, who likes Cow faces the one, who sits immediate left of W.
- III. R likes Zebra and U faces P.

- A. Only I and II B. Only II and III C. Only I and III D. Only III E. Only II

Q12. Who among the following sits second to the left of Q?

- A. T B. V C. N D. S E. R

Q13. _____ sits opposite to the one, who likes Cow and S faces _____.

- A. P, away from the centre B. V, towards the centre C. U, towards the centre
- D. T, away from the centre E. N, away from the centre

Q14. Who among the following likes Dog?

- A. T B. N C. O D. S E. None of the above

Q15. W sits on the _____ table and _____ sits adjacent to U.

- A. Circular, W B. Triangular, X C. Square, Q D. Triangular, V E. Square, N

Q16. Conclusions: I. $U < G$ II. $S > K$ III. $R < K$

- Statements:** I. $S > G \geq P \geq O > K \geq U > R$ II. $G > Y \geq U > R = N \leq S = B > K$
- III. $U \leq O < G = R \leq L < K \leq F = B < S$

- A. Only statements II and III B. Only statement III C. Only statements I and III
- D. Only statement I E. None of the above

Q17. Conclusions: I. $A < P$ II. $H \geq Q$ III. $X < W$

- Statements:** I. $Q > A < W = H \geq B \leq P \geq X$ II. $X < M \leq H = A \geq W < Q > P$
- III. $H \geq W = P, P \geq Q > X \geq B, A \leq Y = B$

- A. Only statement II B. Only statement I C. Only statements I and III D. Only statement III
- E. Only statements II and III

Q18. Conclusions: I. $E \geq V$ II. $M > J$ III. $F \geq C$

- Statements:** I. $F = J \geq V > I = E \leq C \leq Z \leq M < W$ II. $J < W \leq C = M \leq V = Z \leq F \leq I = E$
- III. $E \geq I \geq F \geq Z = V > M = C < W \leq J$

- A. Only statements I and II B. Only statement II C. Only statements II and III
- D. Only statement III E. Only statement I

Q19. Statements: I. Only a few Big is Max II. Only Max is Ultra III. Some Big is Large IV. All Large is Tall

- Conclusions:** I. No Ultra is Large II. Some Tall is not Max III. All Max can never be Big IV. All Big can never be Max

- A. Only I, II and IV B. Only II and IV C. Only II and III D. Only I, III and IV
- E. Only III and IV

Q20. Statements: I. All Package is Packed II. All Packed is Order III. No Order is Old IV. All Old is New

- Conclusions:** I. No Package is New II. Some New is not Packed III. Some Old is Package is a possibility IV. All Packed can never be New

- A. Only I and II B. Only II C. Only II and III D. Only I E. Only III

Directions [21-24]:- Answer the questions based on the information given below.

Twelve persons A, B, C, D, E, F, G, H, I, J, K and L sit in two parallel rows i.e., row I and row II. Six persons sit in row I and face towards the north. Six persons sit in row II and face towards south. The persons of row I face the persons in row II. Row II is to the north of row I. The distance between any two adjacent persons in the row is same. Each of the person is from different countries among Paris, Greece, Russia, China, India, UAE, USA, UK, England, Spain, Canda and New Zealand. The person, whose name starts with consecutive alphabet as per English alphabetical series neither face each other nor sits adjacent to each other.

The number of persons sitting to the left of the one, who is from Spain is one more than the number of persons sitting to the right of the one, who is from Spain. B sits second to the right of the one, who face the one, who is from Spain. Only three persons sit between A and the one, who is from England. H sits immediate right of the one, who is from England. B is not from England. The one, who is from England doesn't face B. G sits third to the left of the one, who is from UAE. F sits second to the right of the one, who faces G. E faces the one, who sits second to the left of C. The one, who is from USA sits immediate left of E. D sits to the left of the one, who is from USA. Only two persons sit between I, who is from Russia and the one, who is from Canada. J faces the one, who is from UK. Neither A nor G is from UK. Only one person sits between K and the one, who is from UK. K is not from Spain. The one, who is from India sits to the left of the one, who is from

China in row II but not immediate left. The one, who is from Paris sits second to the right of the one, who faces the one, who is from Greece.

Q21. Who among the following is from New Zealand?

A.G B.F C.K D.H E.D

Q22. Who among the following sits to the left of the one, who is from Greece?

A.The one, who is from India B.The one, who is from Russia C.The one, who is from China D.Cannot be determined E.The one, who is from UK

Q23. _____ faces L and B is from _____.

A.G, USA B.C, China C.D, Canada D.I, Paris E.E, UAE

Q24. The one who is from _____ sits second to the right of the one, who faces _____, who is definitely from _____.

A.Canda, A, Greece B.Greece, G, Paris C.China, J, Canada D.England, J, Canada E.New Zealand, C, UK

Q25. Eight shops M, N, O, P, Q, R, S and T are at a certain distance from each other. What is the direction of M with respect to S?

Statement I: M is north of N. O is 13m east of N. O is south of P. P is west of Q. R is east of O and south of Q. R is west of S. T is 9m north of S. The distance between T and S is less than the distance between M and N. T is northeast of Q.

Statement II: The distance between Q and R is 3m less than the distance between the distance between T and S. R is 15m southwest of T. N is south of M and west of R.

A.Only I B.Only II C.Both I & II D.Neither I nor II E.None of the above

Q26. Six persons A, B, C, D, E and F sit in a linear row. All of the persons face towards the north and each person likes different colours among Blue, White, Black, Red, Grey, and Yellow, however not necessarily in the same order. Which colour does A likes?

Statement I: C sits third from right end. C sits exactly between B and the one, who likes Black. Only one person sits between B and the one, who likes White. The one, who likes Red, sits immediate right of B. Only two persons sit between the one, who likes Red and D. E, who doesn't like Black, sits immediate left of the one, who likes Grey.

Statement II: Only three persons sit between E and the one, who likes Blue. F sits second to the left of the one, who likes Blue.

Statement III: F likes Red. A sits second to the right of F.

A.Data given in statement I and II together is necessary to answer the question.

B.Data given in statement I and statement III together are sufficient to answer the question.

C.Data given in statement III alone is sufficient to answer the question.

D.Data given in statement II alone is sufficient to answer the question.

E.Data given in statement I alone is sufficient to answer the question.

Q27. Eight persons I, J, K, L, M, N, O and P ranked according to their weight. Who among the following is the heaviest person?

Statement I: P is the fifth lightest person. I and K are heavier than P but none of them is the heaviest person. J is just lighter than N and just heavier than O. L is lighter than O.

Statement II: K is heavier than N, who is heavier than J, O and L. M is heavier

than K and I. I is heavier than K. J is heavier than both O and L. P is the fifth lightest person.

Statement III: I is heavier than P, who is heavier than J and L. M is just heavier than I. M is neither the third heaviest person nor the second heaviest person. N is just lighter than P and K is just heavier than P. O is neither lightest nor sixth lightest person. L is lighter than J.

A.Data given in statement II alone is sufficient to answer the question.

B.Data given in statement I and statement III together are necessary to answer the question.

C.Data given in statement III alone is sufficient to answer the question.

D.Data given in statement II alone is sufficient to answer the question.

E.Data given in any of the statement alone is sufficient to answer the question.

Directions [28-29]: -Answer the questions based on the information given.

'X % Y' means X is the father of Y.

'X @ Y' means Y is the wife of X.

'X # Y' means X is the son of Y.

'X \$ Y' means Y is the sister of X.

Given expression: 'M \$ P, M # O @ T, J % G @ S \$ T, K @ R, K % S'

Q28. How is K related to P?

A.Uncle B.Grandmother C.Grandson D.Grandfather E.Father

Q29. How is child of J related to the child of R?

A.Brother-in-law B.Wife C.Brother D.Husband E.Both option 'A' and 'D' are correct

Q30. If 'R @ H, A % R \$ D, F % H, R % G \$ S', then which among the following option(s) is/are definitely correct?

A.G is the son of H B.F has only two granddaughters C.D is the sister-in-law of H

D.Both options 'C' and 'E' are correct E.A is the father-in-law of H

Directions [31-34]: Answer the questions based on the information given below.

In a room, there are three cupboards X, Y and Z. Each cupboard has different number of shelves. In each cupboard there are some clothing items and rest of the shelves in the cupboards are empty such that there is at least one empty shelf in each cupboard. The height of each cupboard is same such that X is to the west of Y, Y is to the west of Z. The shelves in cupboard Z are less than shelves in cupboard X, similarly the shelves in cupboard X is less than the shelves in cupboard Y. The bottommost shelf is number as 1, the shelf above it is numbered as 2 and so on. There are at least 3 shelves and at most 7 shelves in each cupboard. The topmost shelf of each cupboard is not empty. Also, cupboard Z is adjacent to only cupboard Y, similarly cupboard Z is adjacent to only cupboard Y and cupboard Y is adjacent to both cupboards X and Z.

Note:

1.If there are one/two/three shelves between C and D, then the shelf between them may or may not be empty unless stated otherwise.

2.If an item is one/two/three shelves above another item, then they may or may not be in the same cupboard unless stated otherwise.

3.If an item is adjacent to another item, then they are in the same shelf but in different cupboard, which are adjacent to one another.

4.If there are one/two/three items between two items, then they are in the same cupboard unless stated otherwise.

5.If there are one/two/three items between two items, then the shelf between them may or may not be empty unless stated otherwise.

The item, which is two shelves below the item, which is on the topmost shelf in cupboard Y is on the topmost shelf in cupboard X. Jacket is on an even numbered shelf. The number of shelves above Jacket is same as the number of shelves below Jacket in the same cupboard. Sweater is kept three shelves above Jacket. Only one item is between Top and Sweater. Top is kept on an odd prime numbered shelf. Top is one shelf above Pants in different cupboard. Pants is kept adjacent to an empty shelf. The 2nd shelf in cupboard X is not Empty. Shirt is adjacent to only Skirt. Skirt, Shirt and Jacket are in different cupboards. Jeans is two shelves above Shirt in different cupboards but not on 6th shelf. Jeans is not kept in cupboard Z. Socks is two shelves below Trouser in different shelf. Socks and Jeans are in different cupboards. Socks is not adjacent to an empty shelf. Tie is above T-shirt.

Q31. T-shirt is in _____ cupboard and Shirt is on _____ shelf.

A.X, 4th B.Y, 1st C.Z, 4th D.X, 2nd E.Y, 3rd

Q32. How many clothing items are kept below Tie (in all three cupboards) ?

A.Nine B.Six C.Eight D.Four E.Ten

Q33. _____ is three shelves below _____.

A.Skirt, Top B.Shirt, Tie C.Socks, Sweater D.Pant, Trouser E.None of the above

Q34. Which among the following shelves in cupboard Y are empty?

A.Only 5th, 2nd, and 1st B.Only 6th and 2nd C.Only 4th and 1st D.Only 6th, 4th and 2nd E.Only 5th, 4th and 1st

Q35. If reverse letter of 3rd letter (as per English alphabetical order) from the right end of each word from each group is to be considered, then which among the following group of words can make at least one 4-letter meaningful English word after the rearrangement such that one letter to be used only once?

I. EVEN, COAT, DESK, TREE

II. HIDE, BEND, LIFE, COOK

III. MUST, HOPE, BUSY, ABLE

IV. INCH, FOIL, OPEN, CROW

A.Only I and II B.Only II and IV C.Only III and IV D.Only III and IV

E.Only I and IV

Directions [36-38]: Answer the questions based on the information given below.

Ten friends Kin, Ani, Rimu, Asu, Sivi, Riu, Jik, Pim, Rit and Jim sit around a pentagon shaped table such that one person sit at each corner of the table and one person at each side of the table. Each person faces towards the centre. The person, who sits at the corner wears different type of hats among Cloche, Beanie, Cap, Boater, and Flat Cap, however not necessarily in the same order.

Ani sits fourth to the left of Rimu. Only three persons sit between Rimu and Jim (from either of the sides) . The one, who sits third to the left of Jim wears a hat. Only five persons sit between Rit and the one, who sits third to the left of Jim, when counted from the left of Rit. Sivi sits third to the right of the one, who wears Cloche. Only three persons sit between Sivi and Jik (from either of the sides) . Only __ (2) __ persons sit between the one, who wears __ (3) __ and Jik, when counted from left of Jik. Riu sits adjacent to Jik. Only three persons sit between Riu and Asu, who doesn't wear Cloche. Asu doesn't sit adjacent to Jim. Kin wears Beanie. The one, who wears Cap doesn't sit second the left or second to the right of Kin. The one, who wears Flat cap doesn't sit second to the left of Pim. Pim doesn't sit adjacent to __ (4) __. The one, who wears __ (1) __ sits third to the left of Jim.

Q36 . What will come in place of __ (4) __.?

A.Ani B.Jim C.The one, who sits immediate left of the one, who wears Cap D.The one, who sits second to the left of the one, who wears Boater E.The one, who sits immediate right of the one, who wears Boater

Q37. What will come in place of __ (3) __ and __ (2) __ respectively?

A.four, Cap B.Flat cap, two C.Boater, one D.six, Cloche E.Boater, two

Q38. What will come in place of __ (1) __?

A.Boater B.Flat cap C.Cap D.Cloche E.Beanie

Directions(39-43):-Answer the questions based on the information given below. A 4-digit number arrangement machine when given an input line of numbers rearranges them following a particular rule in each step. The following is an illustration of input and rearrangement.

Input: 6384 9372 4575 7235 8245

Step I: 7195 7153 5353 5313 9353

Step II: 5917 3517 3535 3135 3539

Step III: 4507 1507 1515 0315 1527

Step IV: 7540 7510 5511 5310 7521

Step V: 16 13 12 09 15

Step V is the last step of the above input. As per rules followed in the above steps, find out in each of the given questions the appropriate steps for the given input.

Input for the question:

“4578 6423 9347 2656 5296”

Q39. In the last but one step, which number is 3rd from the right end of the given input?

A.5330 B.5541 C.2211 D.7520 E.None of these

Q40. What is the sum of first three numbers from left end in the final step of the given input? A.40 B.35 C.52 D.30 E.None of these

Q41. Which number is 4th from the left end in step II of the given input?

A.7531 B.7373 C.7733 D.5359 E.None of these

Q42. What is the absolute difference between the 2nd number from the right end in step I and 2nd number from the left end in step II of the given input?

A.1875 B.2481 C.1648 D.2380 E.None of these

Q43. Which among the following is the last number when counted from left end in step II of the given input?

A.9535 B.7733 C.3737 D.5517 E.None of these

Solution(1-5):- 3 1 2 5 2

In step I: All the words are written in reverse order from left to right.

In step II: In all the words the letters are arranged as per the total number of letters in the word.

If the number of letters in the word is odd then, the letters are written as per the English alphabetical order from right to left.

If the number of letters in the word is even then, the letters in the first half are arranged as per the English alphabetical order from left to right and the letters in the second half are also arranged as per the English alphabetical order from left to right.

In step III: For the number the logic stated below is followed:

If the number of letters in the word is odd then, the place value of the letter, as per the English alphabetical order, which is exactly in the middle is written.

If the number of letters in the word is even then, the sum of the place value the two letters, as per the English alphabetical order, which split the word into two equal halves is written.

In step IV:

For word: All the letters remain in the same position except vowels

For numbers: The number in the word is multiplied by the total number of vowels present in the word.

In step V:

For word: The reverse letter of each letter is written as per the English alphabetical order.

For number: In the place of number in each word, the letter which has the same place value, as per English alphabetical order, as the sum of the digits of the number is written.

Input: BREATHING DEFINITION EXPAND FASCINATING LIMITED

Step I: GNIHTAERB NOITINIFED DNAPXE GNITANICSAF DETIMIL

Step II: TRNIHGEB A IINOTDEFIN ADNEPX TSNNIIGFCAA TMLIIED

Step III: TRNI8GEB A IINO24EFIN AD19PX TSNNI9GFCAA TML9IED

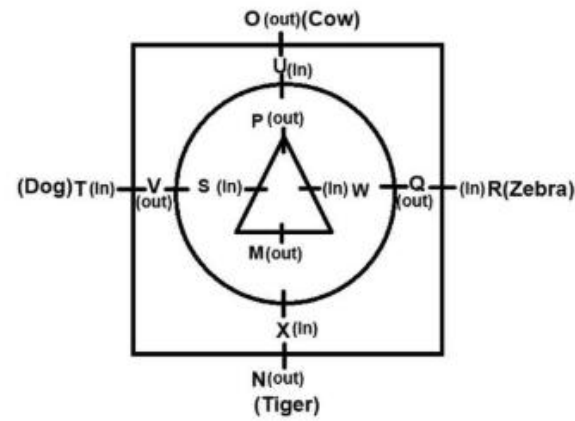
Step IV: TRN24GB N120FN D19PX TSNN27GFC TML18D

Step V: GIMFTY MCUM WJKC GHMMITUX GNOIW

Solution(6-10):- 2 3 5 4 5

Person	Run	Team
Tulika	78	D
Ruhi	48	B
Amit	77	B
Menika	93	C
Megh	61	A
Neerav	64	C
Vibhu	92	B
Devika/Farah	86	A
Farah/Devika	55	D

Solution(11-15):- 4 2 3 1 4



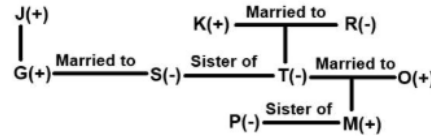
Solution(16-20):- 3 4 2 4 2

Solution(21-24):- 5 4 1 3

Row II	F(Greece/Paris)	A(China)	L(Spain)	C(UK)	H(India)	K(England)
Row I	I(Russia)	D(New Zealand)	G(Paris/Greece)	J(Canada)	B(USA)	E(UAE)

Solution(25-27):- 1 1 5

Solution(28-30):- 4 5 4

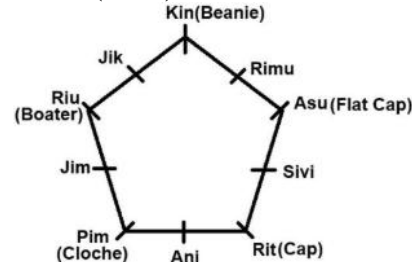


Solution(31-34):- 2 5 4 2

Shelf	X	Y	Z
7	-----	Tie	-----
6	-----	Empty	-----
5	Trouser	Sweater	-----
4	Empty	T-shirt	-----
3	Jeans	Top	Socks
2	Pants	Empty	Jacket
1	Skirt	Shirt	Empty

Solution(35):- 5

Solution(36-38):- 4 2 5



Solution(39-43):- 4 1 2 4 2

The rearrangement takes place in the following ways:

In **Step I**, 1 is added to even digits while 2 is subtracted from odd digits.

In **Step II**, Interchange the position of 1st and last digit and 2nd digit and 2nd last digit with each other.

In **Step III**, product of pair of digits from the left end within the number is written to form a four-digit number.

In **Step IV**, digits are written in the decreasing order within the number.

In **Step V**, the sum of all the digits within the number is written.

Input: 4578 6423 9347 2656 5296

Step I: 5359 7531 7155 3737 3377

Step II: 9535 1357 5517 7373 7733

Step III: 4515 0335 2507 2121 4909

Step IV: 5541 5330 7520 2211 9940

Step V: 15 11 14 6 22